



# 723 DOUBLE RACK OVEN

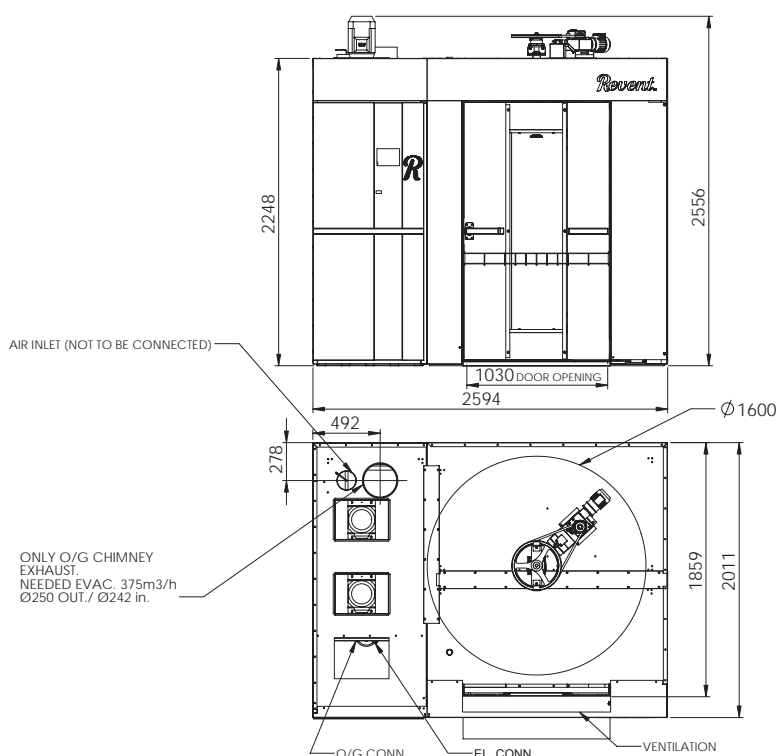
Available in gas, oil or electrically heated models.  
Maximum tray size: 2 single racks 800 x 600 mm

Swing diameter: 1600 mm  
Max load of platform 600 kg

*Revent's line of innovative baking technology is made to take any bread to the highest level. In bread we trust.*



In Bread We Trust



REVENT RACK OVEN 723  
701141

## Standard features

- > Revent TCC System
- > Revent HVS System
- > Revent LID System
- > Revent High Efficiency Heat Exchanger
- > Revent Wedge Installation System
- > Stainless Steel Design
- > Panel GIAC(Graphic InterActive Control)
- > Automatic Steam and Damper Control
- > Double glass door

## Utility Requirements

### Electrical

- > Electrical: available in 3-phase voltages

### Water and Drain

- > Water Supply: G ½"ø 4,5 kg/cm<sup>2</sup> (450 kPa)
- > Drain: 1" connection  
(optional connection to front or rear)

### Ventilation

- > Over Pressure Duct:  
(through door to canopy)
- > Oven Damper Exhaust:  
(through door to canopy)
- > Smoke Exhaust: ø 250 mm  
(oil and gas versions only)
- > Canopy Port: ø 252 mm  
(on optional 600 series canopy)

723 Electrically heated		
Voltage	Heating	Fuse
3PH220-230V	112,5-115kW	400A
3PH400/230V	57,4+57,4kW	100+100A
3PH415/240V	62,3+53,4kW	100+100A

723 Oil/gas heated		
Voltage	Heating	Fuse
3PH220-230V	140kW	35A
3PH400/230V	140kW	25A
3PH415/240V	140kW	25A

## Technical information

- > Maximum Heat Capacity: see table below
- > Temperature range: 50-300°C
- > Total shipping weight: 2960 kgs\*
- > Minimum intake opening: 1025 x 2020 mm  
(standard 3 section delivery)
- > Minimum intake opening: 2020 x 2600 mm  
(optional – one piece shipment)
- > Minimum section tilt up height: 3100 mm
- > Swing diameter: 1600 mm
- > Max load of platform 600 kg
- > Steam Generation 11 l/20 sec
- > Installation requirements: The oven must be installed on a levelled, non-combustible floor. The oven may be installed flush against any wall – only the front and top need to be left open for access. The space on top of the oven must be well ventilated and the temperature must not exceed 50° C. This is to avoid damage to electrical components.

### \*Final shipping

Weights will depend on the final order specifications.

Continuous product development is a Revent policy. Therefore, we reserve the right to change specifications and/or design without prior notice. Pictures or drawings may include product options.

Revent sales representative:



Revent International AB  
PO Box 714, SE 194 27 Upplands Väsby, Sweden  
Phone +46 8 590 006 00, fax +46 8 590 942 10  
E-mail info@revent.se, www.revent.com